



AZMA INTERNATIONAL
Your Complete HVAC-R Solution Partner

COMPANY PROFILE - HVAC



WWW.AZMAINTL.COM

INDEX

S.No	PRODUCTS	Pg.No
1	Copper Products	1-6
2	VRF Joints - Copper	7-8
3	Brazing Items	9-10
4	Refrigerants	11
5	Airconditioning /Ventilation/ Kitchen Equipments	12-15
6	Sealants, Coatings & Adhesives	16
7	Flanging Systems	17
8	Flexible Ducts – Insulated, Un-Insulated & Semi rigid	17-18
9	Flexible Duct Connectors – Insulated & Un-Insulated	19
10	Stuck up Pins	20
11	Adhesive Tapes	21
12	Grills & Registers	22
13	Air Filters	23
14	Sheets & Coils - GI/MS/SS/AL	24
15	Pre-Insulated Duct Sheets	25
16	Insulation materials – XLPE/NBR/ROCKWOOL/GLASS WOOL	26-29
17	Dampers – VCD, FD, MSFD & MSD	30
18	Sound Attenuators, VAVs & Duct Heaters	31-32
19	Hangers & Supports	32-33
20	Vibration Isolators & Other Miscellaneous Items	34

About Us



www.azmaintl.com

Azma International, with its strategic presence in Jebel Ali Free Zone and Mainland, Dubai-UAE, is a professionally managed and rapidly growing company offering a comprehensive range of HVAC and Refrigeration products – all under one roof.



Our primary objective is to provide customers with a convenient one-stop solution through a continuously expanding selection of genuine, high-quality, and reliable products at competitive prices. We are committed to upholding the highest industry standards while meeting customer requirements efficiently and promptly.



Founded by a team of industry professionals with over two decades of expertise in the HVAC-R industry, Azma International has been serving clients across the Middle East and African region.

Driven by innovation and a sense of responsibility as a leading player in the field, we constantly seek modernization and technological advancement to deliver superior value to our customers. Our pursuit of excellence transcends borders – we continuously evolve, expand, and enhance our offerings to ensure exceptional product quality and outstanding customer service.



Azma International proudly collaborates with major global brands by offering a full range of HVAC-R products at highly competitive rates. Our customer-centric and professional approach ensures complete satisfaction and long-term partnerships.

We welcome customers and business partners worldwide to join hands with Azma International – a company built on the values of genuineness, quality, trust, and reliability – as we move together toward a brighter and more sustainable future.

 **TRUST**
trustworthiness and reliability in every aspect of our business. 

 **GENUINNESS**
we pave the way for successful collaborations and mutual growth. 

 **QUALITY**
ensuring that every product we offer meets the highest standards. 

 **RELIABILITY**
guaranteeing peace of mind for everyone we work with. 

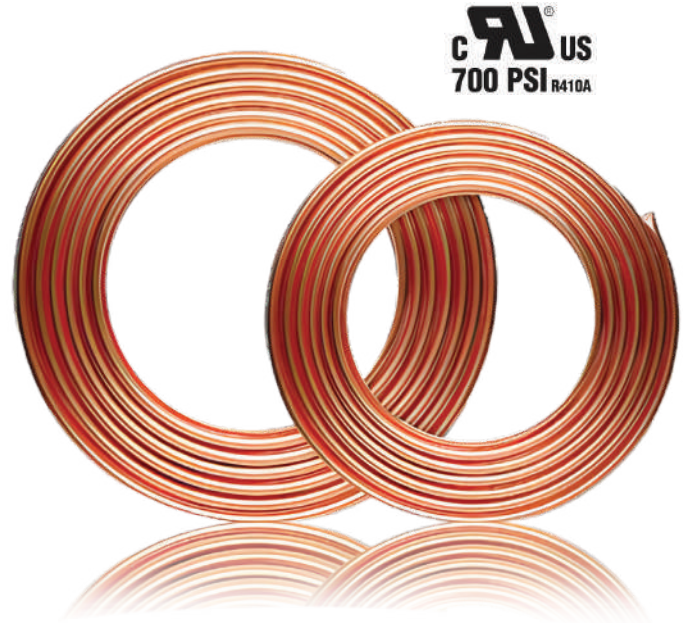
ASSOCIATED BRANDS

COPPER PRODUCTS

Pancake Coils

Pancake Coil Copper Tube (PCC) is intended for use in the connection, repairs, or alterations of air conditioning or refrigerator units in the field. We supply Pancake tube in accordance with specifications given in ASTM Standards (B88, B280) and European Norm standards (EN12735) and other general norms.



Product	Temper	Length	Uses	Specifications
Copper Refrigeration Tube	Soft	50 ft. coils 100 ft. coils	Manufacture, installation and maintenance of refrigeration and air conditioning equipment.	ASTM-B280 ASTM-B743 JIS-H3300 AS-1571 EN-12735-1

	Actual Size in Inches	Outside diameter			Wall Thickness			Theoretical Weight	
		inch	mm	Tolerance (inch)	inch	mm	Tolerance (inch)	lb/ft	kg/m
Coil type - Standard	1/4	0.25	6.35	0.002	0.03	0.762	0.003	0.0804	0.12
	5/16	0.312	7.92	0.002	0.032	0.813	0.003	0.109	0.162
	3/8	0.375	9.52	0.002	0.032	0.813	0.003	0.134	0.199
	1/2	0.5	12.7	0.002	0.032	0.813	0.003	0.182	0.271
	5/8	0.625	15.9	0.002	0.035	0.889	0.004	0.251	0.373
	3/4	0.75	19.1	0.0025	0.035	0.889	0.004	0.305	0.454
	3/4	0.75	19.1	0.0025	0.042	1.07	0.004	0.362	0.539
	7/8	0.875	22.2	0.003	0.045	1.14	0.004	0.455	0.677

Standard – ASTM B 280

According to the EN standards, the Pancake tube has good bending properties for use in utility supplies such as plumbing installations, gas transport networks, air conditioning systems, and refrigerant piping. These products are usually supplied in the annealed form. All coils are cleaned and capped to prevent contaminants from entering. These are individually labeled, shrink-wrapped, and boxed in cardboard cartons for ease of handling and distribution.

	Outer Diameter	Outer Diameter	Wall Thickness	Wall Thickness
	inch	mm	inch	mm
Coil type - Economy	3/16	4.76	0.024	0.61
	1/4	6.35	0.024	0.61
	5/16	7.94	0.024	0.61
	3/8	9.53	0.024	0.61
	1/2	12.7	0.028	0.71
	5/8	15.88	0.028	0.71
	3/4	19.05	0.032	0.81
	7/8	22.23	0.040	1.02

Standard - ASTM B 743

	Outer Diameter	Outer Diameter	Wall Thickness	Wall Thickness
	inch	mm	inch	mm
Coil type - Low Economy	1/4	6.35	0.020	0.51
	3/8	9.53	0.022	0.56
	1/2	12.7	0.024	0.61
	5/8	15.88	0.026	0.65
	3/4	19.05	0.028	0.71
	7/8	22.23	0.030	0.76

Standard - ASTM B 280 - Low Eco

COPPER PRODUCTS

Straight Lengths

Straight copper tubes manufactured to ASTM B 280 Type L ACR standard are used for air conditioning & refrigeration industries, electrical industries and sanitary purposes. The Straight length Seamless Copper Tubes with high precision, ultra clean surfaces, bright finish, even structure, high efficient heat exchanging, welding easily, corrosion resistant and good for mobility & straight length with high electrical conductivity could be supplied.



C  **US**
700 PSI R410A

Product	Temper	Lengths	Uses	Specifications
Type K Copper Water Tube, (heavy wall)	Hard	12ft straight 20ft straight	Domestic water service and distribution, fire protection, solar, fuel/fuel oil HVAC, snow melting, compressed air, natural gas, liquified petroleum (LP) gas, vacuum	ASTM-B88 JIS H3300 AS-1432
	Soft	12ft straight 50ft coils 100ft coils		
Type L Copper Water Tube, (heavy wall)	Hard	20ft straight	Domestic water service and distribution, fire protection, solar, fuel/fuel oil, HVAC, snow melting, compressed air, natural gas, liquified petroleum(LP) gas, vacuum	ASTM-B88 JIS-H3300 AS-1432
	Soft	20ft coils 50ft coils		
Type M Copper Water Tube, (heavy wall)	Hard	20ft straight	General plumbing and heating purposes; drainage waste, vent and other light pressure uses.	ASTM-B88 JIS-H3300 AS-1432

Available Standards – ASTM B 280 Type L ACR / ASMT B 280 ECO / ASTM B 88 Type K, L & M / EN 1057- Type X & Type Y

ASTM B88 & EN 1057 standard copper pipes are used for hot and cold-water distribution systems, gas in sanitary & heating applications. Made from high-grade copper, ASTM B88/EN 1057 copper pipes offer superior corrosion resistance and heat transfer capabilities. They can be used in high-pressure applications such as plumbing, HVAC systems, and irrigation. These copper pipes are available in a variety of sizes and wall thicknesses that make them ideal for any project or application. Whether you're looking for an efficient way to deliver hot or cold water, you can trust ASTM B88/EN 1057 copper pipes to provide superior performance. Quality materials, ease of installation, durability, and longevity make these pipes the top choice for residential, commercial, and industrial applications.

Straight Lengths

Straight Length Copper Tube ASTM B280 / ASTM B280 Type L ACR	Actual Size in Inches	Outside diameter			Wall Thickness			Theoretical Weight		ASTM B 280 - ECO/B 743
		inch	mm	Tolerance (inch)	inch	mm	Tolerance (inch)	lb/ft	kg/m	
		3/8	0.375	9.52	0.001	0.03	0.762	0.003	0.126	
1/2	0.5	12.7	0.001	0.035	0.889	0.004	0.198	0.295	3/8" x 0.61mm x 5.8 mtr	
5/8	0.625	15.9	0.001	0.04	1.02	0.004	0.285	0.424	1/2" x 0.61mm x 5.8 mtr	
3/4	0.75	19.1	0.001	0.042	1.07	0.004	0.362	0.539	5/8" x 0.71 mm x 5.8 mtr	
7/8	0.875	22.2	0.001	0.045	1.14	0.004	0.455	0.677	3/4" x 0.89 mm x 5.8 mtr	
1 1/8	1.125	28.6	0.0015	0.05	1.27	0.005	0.655	0.975	7/8" x 0.81mm x 5.8 mtr	
1 3/8	1.375	34.9	0.0015	0.055	1.4	0.006	0.884	1.32	1 1/8" x 0.91mm x 5.8 mtr	
1 5/8	1.625	41.3	0.002	0.06	1.52	0.006	1.14	1.7	1 3/8" x 1.02mm x 5.8 mtr	
2 1/8	2.125	54	0.002	0.07	1.78	0.007	1.75	2.6	1 5/8" x 1.07mm x 5.8 mtr	
2 5/8	2.625	66.7	0.002	0.08	2.03	0.008	2.48	3.36	2 1/8" x 1.50mm x 5.8 mtr	
3 1/8	3.125	79.4	0.002	0.09	2.29	0.009	3.33	4.96		
3 5/8	3.625	92.1	0.002	0.1	2.54	0.01	4.29	6.38		
4 1/8	4.125	105	0.002	0.11	2.79	0.011	5.38	8.01		

Type K (STRAIGHT, DRAWN) ASTM B88	Nominal Size in Inches	Actual Size in Inches	Outside diameter			Wall Thickness			Theoretical Weight	
			inch	mm	Tolerance (inch)	inch	mm	Tolerance (inch)	lb/ft	kg/m
			1/4	3/8	0.375	9.52	0.001	0.035	0.89	0.0035
3/8	1/2	0.500	12.7	0.001	0.049	1.24	0.005	0.269	0.4	
1/2	5/8	0.625	15.9	0.001	0.049	1.24	0.005	0.344	0.512	
5/8	3/4	0.750	19.1	0.001	0.049	1.24	0.005	0.419	0.624	
3/4	7/8	0.875	22.2	0.001	0.065	1.65	0.006	0.639	0.953	
1	1 1/8	1.125	28.6	0.0015	0.065	1.65	0.006	0.838	1.25	
1 1/4	1 3/8	1.375	34.9	0.0015	0.065	1.65	0.006	1.034	1.54	
1 1/2	1 5/8	1.625	41.3	0.002	0.072	1.83	0.007	1.359	2.03	
2	2 1/8	2.125	54.0	0.002	0.083	2.11	0.008	2.060	3.07	
2 1/2	2 5/8	2.625	66.7	0.002	0.095	2.41	0.01	2.922	4.36	
3	3 1/8	3.125	79.4	0.002	0.109	2.77	0.011	3.996	5.96	
3 1/2	3 5/8	3.625	92.1	0.002	0.120	3.05	0.012	5.112	7.62	
4	4 1/8	4.125	104.8	0.002	0.134	3.40	0.013	6.500	9.69	
5	5 1/8	5.125	130.2	0.002	0.160	4.06	0.016	9.654	14.4	
6	6 1/8	6.125	155.6	0.002	0.192	4.88	0.019	13.843	20.64	

Type L (STRAIGHT, DRAWN) ASTM B88	Nominal size in inches	Actual Size in Inches	Outside diameter			Wall Thickness			Theoretical Weight	
			inch	mm	Tolerance (inch)	inch	mm	Tolerance (inch)	lb/ft	kg/m
			1/4	3/8	0.375	9.52	0.001	0.030	0.76	0.003
3/8	1/2	0.500	12.7	0.001	0.035	0.89	0.004	0.198	0.295	
1/2	5/8	0.625	15.9	0.001	0.040	1.02	0.004	0.285	0.425	
5/8	3/4	0.750	19.1	0.001	0.042	1.07	0.004	0.362	0.54	
3/4	7/8	0.875	22.2	0.001	0.045	1.14	0.004	0.453	0.676	
1	1 1/8	1.125	28.6	0.0015	0.050	1.27	0.006	0.654	0.975	
1 1/4	1 3/8	1.375	34.9	0.0015	0.055	1.40	0.006	0.881	1.31	
1 1/2	1 5/8	1.625	41.3	0.002	0.060	1.52	0.006	1.142	1.7	
2	2 1/8	2.125	54.0	0.002	0.070	1.78	0.007	1.749	2.61	
2 1/2	2 5/8	2.625	66.7	0.002	0.080	2.03	0.008	2.475	3.69	
3	3 1/8	3.125	79.4	0.002	0.100	2.54	0.01	4.284	6.39	
3 1/2	3 5/8	3.625	92.1	0.002	0.114	2.79	0.011	5.368	8.01	
4	4 1/8	4.125	104.8	0.002	0.125	3.18	0.012	7.596	11.33	
5	5 1/8	5.125	130.2	0.002	0.140	3.56	0.014	10.183	15.19	

Type M (STRAIGHT, DRAWN) ASTM B88	Nominal size in inches	Actual Size in Inches	Outside diameter			Wall Thickness			Theoretical Weight	
			inch	mm	Tolerance (inch)	inch	mm	Tolerance (inch)	lb/ft	kg/m
			3/8	1/2	0.500	12.7	0.001	0.025	0.64	0.002
1/2	5/8	0.625	15.9	0.001	0.028	0.71	0.003	0.203	0.303	
3/4	7/8	0.875	22.2	0.001	0.032	0.81	0.003	0.327	0.488	
1	1 1/8	1.125	28.6	0.0015	0.035	0.89	0.004	0.464	0.692	
1 1/4	1 3/8	1.375	34.9	0.0015	0.042	1.07	0.004	0.68	1.01	
1 1/2	1 5/8	1.625	41.3	0.002	0.049	1.24	0.006	0.939	1.4	
2	2 1/8	2.125	54.0	0.002	0.058	1.47	0.006	1.457	2.17	
2 1/2	2 5/8	2.625	66.7	0.002	0.065	1.65	0.006	2.023	3.02	
3	3 1/8	3.125	79.4	0.002	0.072	1.83	0.007	2.672	3.98	
3 1/2	3 5/8	3.625	92.1	0.002	0.083	2.11	0.008	3.573	5.33	
4	4 1/8	4.125	104.8	0.002	0.095	2.41	0.01	4.653	6.94	
5	5 1/8	5.125	130.2	0.002	0.109	2.77	0.011	6.644	9.91	
6	6 1/8	6.125	155.6	0.002	0.122	3.01	0.012	8.9	13.27	



CRAI[®] US
700 PSI R410A



LWC Coils



LWC tubes are normally produced according to ASTM & European Norm specifications. These specifications were prepared to take account of the requirements of ACR industry. Level Wound Coils are especially suited to long production runs for industrial applications and it is widely applied to the Air Conditioning & Refrigeration as well as the Heat Exchanger field. Each millimeter of tubes is 100% Eddy-Current tested and any surface defects found will be clearly marked by black color. LWC copper tubes are supplied in the form of “Eye to the Wall or Sky” form as per customer request. During the Annealing process the inside and outside tube is normal cleaned with Nitrogen purging.

Level Wound Coils are most supplied in the soft and light annealed form, also they can be ordered in hard drawn temper.

Available Standards – ASTM B 68, B 75 & B 88

General Specifications							
Sizes		Material	Temper		Coil Weight	Form of Packing	
Outside Diameter (mm) 4 – 19.05	Wall Thickness (mm) 0.28 – 1.20	Cu: 99.90% Phosphorous: 0.015-0.040%	Light Annealed (O50)	Soft Annealed (O60)	80-400 (kg)	With Bobbin	Bobbin-less
		C12200 DHP (ASTM B68, B75, B88, B903)				Cardboard & Wooden Reels	Cardboard
		Cu - DHP (EN 12735, En 12449)	Also Can be supplied in Hard Drawn temper		Stacked on pallets and shrink wrapped		

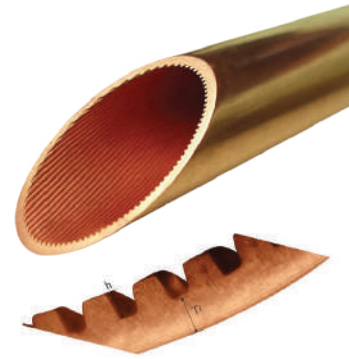
Applications: Air Conditioning units and heat exchanger industries, Refrigeration and general engineering applications.

Products Range															
W.T. / O.D.	mm	0.3	0.35	0.4	0.45	0.5	0.55	0.6	0.63	0.7	0.76	0.8	0.9	1	1.2
	inch	0.012	0.014	0.016	0.018	0.020	0.022	0.024	0.025	0.028	0.030	0.031	0.035	0.039	0.047
4	----			✓	✓	✓	✓	✓	✓	✓	✓	✓			
4.76	3/16			✓	✓	✓	✓	✓	✓	✓					
6.35	1/4		✓	✓	✓	✓	✓	✓	✓	✓	✓	✓	✓		
7.93	5/16	✓	✓	✓	✓	✓	✓	✓	✓	✓	✓	✓	✓	✓	
9.52	3/8	✓	✓	✓	✓	✓	✓	✓	✓	✓	✓	✓	✓	✓	
12	----		✓	✓	✓	✓	✓	✓	✓	✓	✓	✓	✓	✓	
12.7	1/2		✓	✓	✓	✓	✓	✓	✓	✓	✓	✓	✓	✓	✓
15.87	5/8			✓	✓	✓	✓	✓	✓	✓	✓	✓	✓	✓	✓
16	----					✓	✓	✓	✓	✓	✓	✓	✓	✓	
18	----							✓	✓	✓	✓	✓	✓	✓	
19.05	3/4							✓	✓	✓	✓	✓	✓	✓	

Note: Other sizes can be made as per customer requirement according to mutual agreement.

Inner Grooved Copper Tube

Inner Grooved copper are used to improve the heat transfer characteristics of tube, the inner surface of the tube is provided with spirally running grooves. Increased internal surface area, turbulent flow of refrigerant and uniform distribution of refrigerant around the periphery of tube cause increment of efficiency. Heat transfer coefficient of these tubes is about 1.8-2 time of the same specification of plain tube. It is widely applied in Air Conditioning and Refrigeration Industries, which are in conformance with the developing tendency of the air conditioner to high efficiency, energy saving, environment-friendly and healthy.



General Specifications

Outside Diameter (mm)	Temper		Coil Weight	Delivery Form
5.00 - 15.87	Light Annealed O50 (ASTM B75,B68,B903)	Hard Drawn H85 (ASTM B75,68,B903)	80 – 170 Kg	LWC and Straight length
Application: Air Conditioning & Refrigeration Industry				

Range of Grooving patterns



Specification of Inner Grooved Tubes

Specification	Outside Diameter OD (mm)	Bottom Wall Thickness TW (mm)	Groove Depth Hf (mm)	Apex Angle α (degree)	Helix Angle β (degree)	Number of Tooth (Num.)	Unit Weight (gr/m)
$\Phi 5.00 \times 0.20 + 0.15$	5.00 ^{+0.05}	0.20 ^{+0.03}	0.15 ^{+0.02}	40 ⁻²⁷	18 ⁺²²	40	34
$\Phi 7.00 \times 0.22 + 0.10$		0.22 ^{+0.03}	0.10 ^{+0.02}	40 ⁻²⁷	15 ⁺²²	65	47
$\Phi 7.00 \times 0.23 + 0.14$	7.00 ^{+0.05}	0.23 ^{+0.03}	0.14 ^{+0.03}	40 ⁻²⁷	18 ⁺²²	58	54
$\Phi 7.00 \times 0.25 + 0.10$		0.25 ^{+0.03}	0.10 ^{+0.02}	40 ⁻²⁷	18 ⁺²²	65	52
$\Phi 7.00 \times 0.25 + 0.18$		0.25 ^{+0.03}	0.18 ^{+0.02}	40 ⁻²⁷	18 ⁺²²	50	58
$\Phi 7.00 \times 0.28 + 0.15$		0.28 ^{+0.03}	0.15 ^{+0.02}	40 ⁻²⁷	18 ⁺²²	50	62
$\Phi 7.93 \times 0.28 + 0.15$		7.93 ^{+0.05}	0.28 ^{+0.03}	0.15 ^{+0.02}	40 ⁻²⁵	18 ⁺²²	50
$\Phi 9.52 \times 0.27 + 0.16$	9.52 ^{+0.05}	0.27 ^{+0.03}	0.16 ^{+0.02}	40 ⁻²⁷	18 ⁺²²	70	82
$\Phi 9.52 \times 0.28 + 0.12$			0.12 ^{+0.02}	40 ⁻²⁷	18 ⁺²²	65	80
$\Phi 9.52 \times 0.28 + 0.15$		0.28 ^{+0.03}	0.15 ^{+0.02}	40 ⁻²⁷	18 ⁺²²	60	86
$\Phi 9.52 \times 0.28 + 0.20$		0.20 ^{+0.03}	0.20 ^{+0.03}	53 ⁻²⁷	18 ⁺²²	60	89
$\Phi 9.52 \times 0.30 + 0.20$		0.30 ^{+0.03}	0.20 ^{+0.03}	53 ⁻²⁷	18 ⁺²²	60	95
$\Phi 9.52 \times 0.34 + 0.15$		0.34 ^{+0.03}	0.15 ^{+0.02}	50 ⁻²⁷	18 ⁺²²	60	103
$\Phi 9.52 \times 0.34 + 0.20$		0.34 ^{+0.03}	0.20 ^{+0.02}	50 ⁻²⁷	18 ⁺²²	60	11
$\Phi 9.52 \times 0.45 + 0.20$		0.45 ^{+0.04}	0.20 ^{+0.03}	48 ⁻²⁷	18 ⁺²²	60	132
$\Phi 12.00 \times 0.41 + 0.20$	12.00 ^{+0.05}	0.41 ^{+0.04}	0.20 ^{+0.03}	65 ⁻²⁷	18 ⁺²²	60	156
$\Phi 12.70 \times 0.35 + 0.25$	12.70 ^{+0.05}	0.35 ^{+0.03}	0.25 ^{+0.03}	53 ⁻²⁷	18 ⁺²²	65	155
$\Phi 12.70 \times 0.45 + 0.20$		0.45 ^{+0.04}	0.20 ^{+0.03}	53 ⁻²⁷	18 ⁺²²	50	180
$\Phi 15.87 \times 0.40 + 0.30$	15.88 ^{+0.05}	0.40 ^{+0.04}	0.30 ^{+0.03}	53 ⁻²⁷	18 ⁺²²	60	218
$\Phi 15.87 \times 0.45 + 0.30$		0.45 ^{+0.04}	0.30 ^{+0.03}	53 ⁻²⁷	18 ⁺²²	75	239
$\Phi 15.87 \times 0.55 + 0.25$		0.55 ^{+0.05}	0.25 ^{+0.02}	53 ⁻²⁷	18 ⁺²²	60	295
$\Phi 15.88 \times 0.63 + 0.20$		0.63 ^{+0.05}	0.20 ^{+0.03}	53 ⁻²⁷	18 ⁺²²	75	316

Note: Other sizes can be manufactured as per customer requirement with mutual agreement.

Fittings – Copper & Brass



We offer a complete range of copper and brass fitting including end feed copper fittings, copper press fittings, solder ring copper fittings, ACR copper fittings, brass compression fittings, brass solder fittings, brass thread fittings, and PEX fittings. Copper pipe fittings are ideal for plumbing and ACR pipe installation and offer a speedy, convenient solution for amateurs and professionals alike. Brass fittings are the collective name for the parts of the piping system that play a role in connecting, controlling, diverting, diverting, sealing, supporting, etc. The main categories are elbow, direct, reducer, and tee. Used to connect copper pipes, iron pipes, PPR pipes, ABS pipes, etc.

- Wide range of sizes
- Wrought copper, Press, Soldering ring, Brass range selection
- Cleaned and bagged, customized package available
- For residential, commercial plumbing and HVAC systems

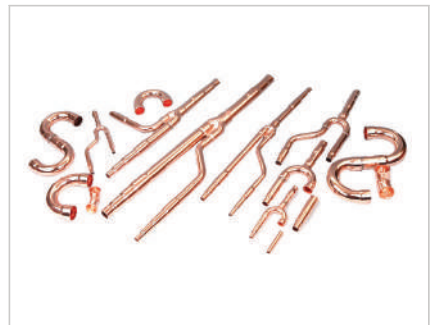
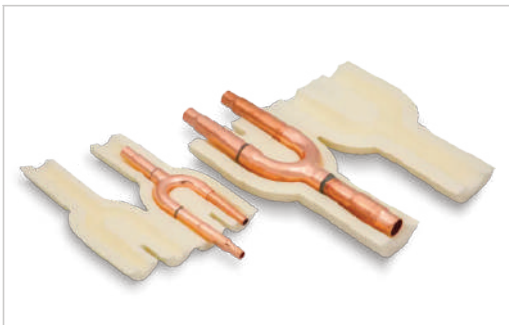


Azma International for Copper Pancake Coils, Straight Length, Copper & Brass Fittings deals with major brands like LS Metal, rime from Vietnam & Sampo from Korea & all kind of sizes & models are available upon request.

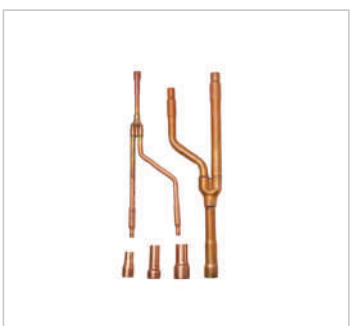
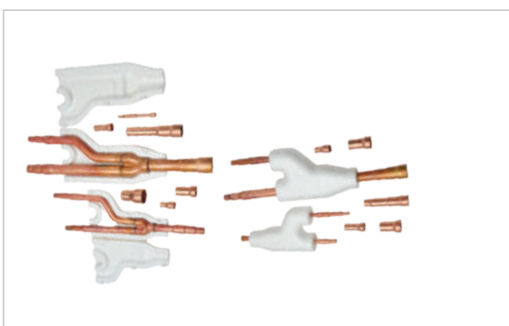
Brands



VRF Joints



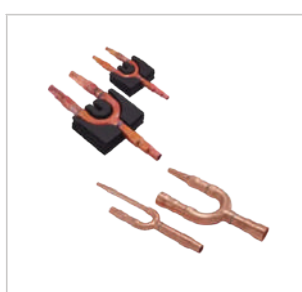
Universal Branch Pipes REF Joint for all types of VRF/VRV Systems working on R410 Refrigerant



DA Series Y Joint with EPS/NBR/XLPE Insulation REF JOINTS



GR SERIES



BSR SERIES



LG SERIES

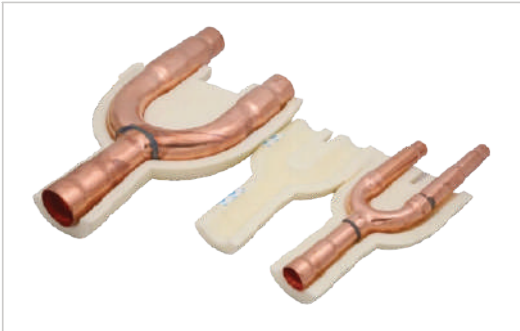
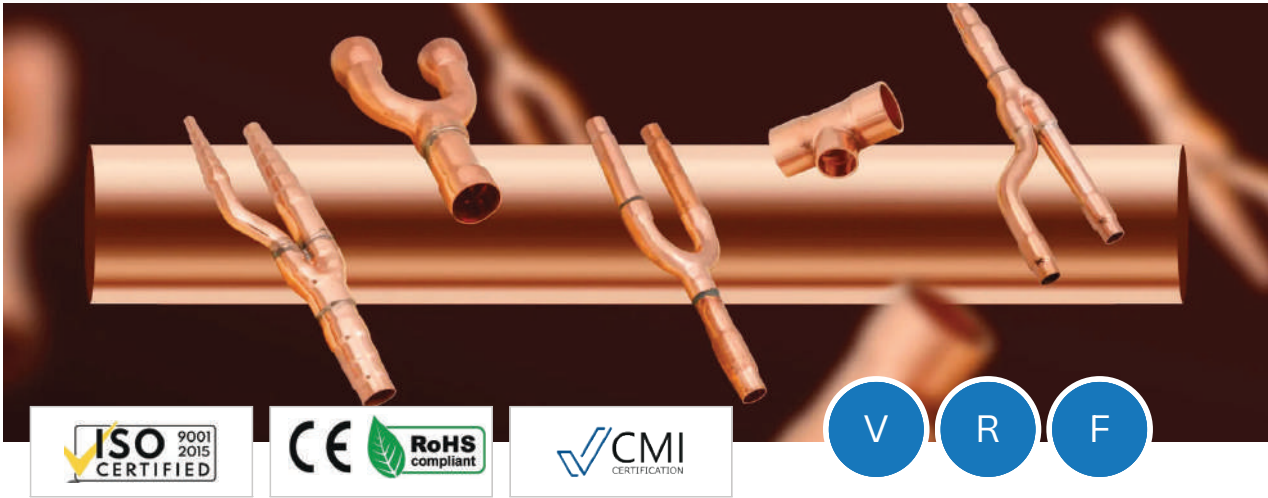


HIT SERIES

Brands



VRF Joints



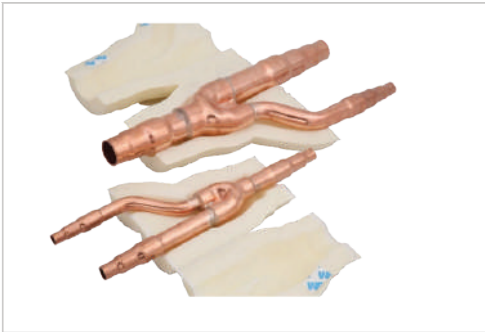
Copper Y Joint



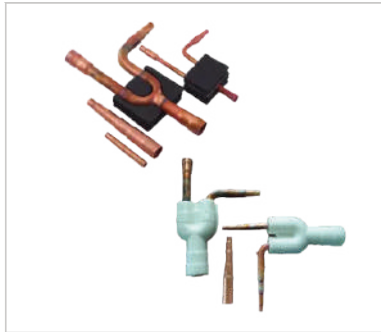
Copper Y Fitting



Copper T Joint



VRF Y Joint



HAE Series



Branch Piping



VRF Refrigerant Branch Piping Copper Compression T Fitting

Brands



BRAZING ALLOYS & FLUXES

The Harris Products Group is a world leader in metal working products used in the brazing, soldering, welding, cutting and gas distribution industries.



HARRIS® 0



This low-cost alloy is suitable for most copper-to-copper or brass joints where good fit-up exists, and the assemblies are not subject to excessive vibration nor movement.

STAY-SILV® 2



This economical, low silver alloy, is designed to broaden the melting range of Harris 0, and has proven useful in some specific applications where mechanical properties are less critical.

STAY-SILV® 5



Stay-Silv® 5 This medium range alloy is well suited where close fit-up cannot be maintained. This filler metal is somewhat more ductile than Harris 0 or Stay-Silv 2

STAY-SILV® 15



Stay-Silv®15 This is a very strong and formidable brazing filler metal and is excellent for situations in which close fit-up does not exist, and where thermal expansion and service vibration are involved.

STAY-SILV® 45



These high-silver brazing alloys are commonly used for brazing joints on HVAC equipment, drill bits, machine parts, and other items that will be subject to high vibration.

BLOCKADE



BLOCKADE® is a phosphorus-tin-silicon alloy engineered to provide a low cost alternative to silver bearing filler metals. It is self fluxing on copper and its lower melting temperature makes it an excellent choice for brass. BLOCKADE flows rapidly but can be used to "cap" brazed joints.

The Harris Products Group is a world leader in metalworking products used in the brazing, soldering, welding, cutting, and gas distribution industries. The company was formed in 2006 with the merger of Harris Calorific, Inc., a manufacturer of gas welding and cutting equipment and gas regulation and distribution systems, and the J.W. Harris Co., a manufacturer of brazing and soldering alloys and welding consumables. The Harris Products Group currently operates manufacturing facilities in Mason, Ohio, USA; Gainesville, Georgia, USA; Dzierzonow, Poland, and Sao Paulo, Brazil. Each is ISO 9001 certified for quality management systems.

Azma International for Brazing items deals with major brand like Harris from USA.

All models are available upon request.



Brand



Refrigerants



Azma International offers different brands of refrigerants to cater Heating, Ventilation, Air Conditioning and refrigeration industries, offering a wide range of products like HCFCs, HFCs, HCs, Natural refrigerants and MAPP Gas.

We supply high-purity hydrocarbons in the refrigerants, pharmaceutical, industrial, electronics, agricultural and chemical industries. Refrigerants Trading portfolio contains products with different performance characteristics that meet the diverse needs of everyone in the HVACR industry.

Applications

- Refrigerant Gases for Car AC Systems
- Refrigerants for Commercial and Residential AC Systems
- Refrigerants for Industrial AC Systems

R134A - R410A - R404A - R407C - R32 - R507A - R417A - R600A - R290 - R22 - R141B - AC Flush Gas

Azma International for Refrigerants deals with major brands like Honeywell- USA, Refron-India, Floron-India & Chinese origin. All models are available upon request.

Brands

Honeywell



Chinese Origin

Air Handling Units



- EUROVENT certified units (EAPS Range)
- Airflow Range: 500 ~50,000 CFM
- Dedicated Selection Software - Ecoair Select
- AMCA Certified Blower w/ IE2/IE3 Motors
- AHRI Certified Coils & UL Listed Filters

Air Cooled Condensing Units



- Capacity Range: 27 kW – 162 kW at T3 conditions.
- Hermetic Sealed Scroll compressor
- Direct drive axial type fans w/ ext. rotor motor
- Refrigerant: R407c, R410a,
- Compliance to ESMA Standard
- Filter drier, side glass, expansion valve, ball valve with charging port

Fan Coil Units



- AHRI 440 Certified chilled water fan coil units.
- Static Pressure Range: 0 ~150 Pa
- Dedicated Selection Software
- Available in Ceiling Concealed, Ducted, Wall Mounted, Decorative & Cassette Units
- Optional features: Double skin panels, Stainless steel drain tray, EC Motors, Powder coated cabinet can be provided.

Rooftop Package Units



- Nominal Capacity: 5 – 30 Ton
- Refrigerant: R410a
- Hermetic Sealed Scroll compressor
- Direct drive axial type fans w/ ext. rotor motor
- AMCA Certified Blower w/ IE2/IE3 Motors
- Compliance to ESMA Standard

VRF Units & Split Units



- Capacity ranges from 8 HP to 32 HP outdoor unit as a single module with ultra wide operating range of (-5 to 56C) for cooling and (-27 to 26C) for heating.
- VRF outdoor has a wide voltage range, adjustable ESP upto 110Pa with auto restart and auto addressing functions.
- 8 stage oil return technology, duty cycle operation and backup operation, easy installation service.
- ESMA Certified Units

Energy Recovery Ventilators



- Uses plate heat exchangers for reliability.
- Airtight separation of outdoor and exhaust air.
- No moving parts for a longer service life.
- ER paper for high moisture permeability and tear resistance.
- Blocks larger-diameter odor molecules for clean fresh air.
- Fashionable and silent with precision molding.
- Employs micro punch anechoic technology for quiet operation.
- Includes a bypass function for versatility.
- High airproof feature for efficiency.
- Designed for easy maintenance.

Brands

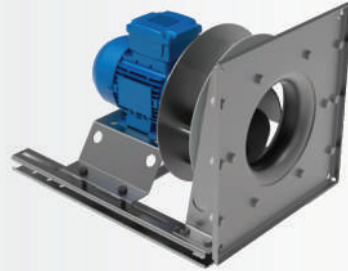


Up-Blast Exhaust Fans



- Airflow Range: 300 ~52,000 m³/h (176~30,588 CFM)
- Static Pressure Range: 100 ~700 Pa (0.4~2.81 in.WG.)
- Drive Types: Direct/ Belt drive
- Mounting Types: Rooftop
- Applications: Rooftop ventilation / Explosion proof air supply and exhaust / Smoke removal
- Certification: UL 705 / UL 783

Plug / Plenum Fans



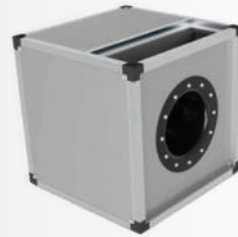
- Nominal Size: 280 - 900 mm
- Motor Power max.: 18/45 kW
- Available in EC / AC / Squirrel cage Motors

EC Fans



- Operational efficiencies up to IE5
- Air Volume range: 0-4,500 m³/h
- Static Pressure range: 0-700 Pa
- Operational temperature: -25 - 60
- Drive Type: EC Motor
- Applications: Air intake and exhaust, heat dissipation

Cabinet Inline centrifugal Fan



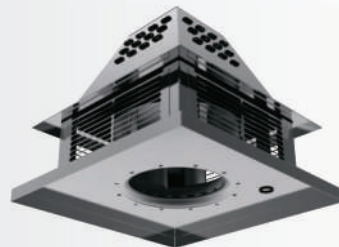
- Quiet Ventilation: Insulated acoustic cabinet for noise reduction.
- Efficient Operation: Removes heat, smoke, and odors.
- VIF Series: Direct drive, backward curved impellers (steel or aluminum).
- Temperature Handling: Operates up to 120°C.
- Compliance: Meets ISO 1940 / AMCA 204 for smooth operation.
- Size Range: Impeller diameters from 315mm to 710mm.

400C / 2hr Fire Rated Fans



- Airflow Range: 200 ~18,000 CFM
- Static Pressure Range: 75 ~2,000 Pa
- Drive Type: Direct drive
- Certified by APPLUS
- Applications: Industrial ventilation / Explosion proof air exhaust / Kitchen fume exhaust
- Certification: UL 762 / UL 705 / UL 793

Down Blast Centrifugal Fan



- Airflow Range: 1,000~30,000 m³/h
- Drive Types: Direct / Belt drive
- Impeller Type: Backward Curved / Inclined
- Material: Aluminum / Steel / Galvanized Sheet
- Compliance: F400°C / 2 Hours
- Applications: Roof & wall-mounted, suitable for commercial & industrial use (e.g., schools, hospitals, offices).
- Certification: UL 705 / UL 783

Brands



Cabinet Centrifugal Fan



- Cabinet centrifugal fan designed for car park exhaust and fire-resistant applications.
- Penta post design and strong aluminum joints for a sturdy framework.
- Panels made of durable pre-painted galvanized sheet steel for protection.
- High-performance centrifugal impeller made from steel sheet, available in backward or forward curved options.
- Thoroughly tested, meets 400C/2hour performance criteria for reliable operation in extreme conditions.

Inline Centrifugal Fan



- Handles hot air up to 120 °C, even with grease (with grease filters) in challenging conditions.
- Ideal for ventilation in restaurant kitchens, café kitchens, industrial bakeries, and welding operations.
- Designed to eliminate contaminated air and gases from welding processes.
- Efficient ventilation in high-resistance conditions.
- Suitable for extracting grease-laden hot air in various settings, including restaurant kitchens, café kitchens, and industrial bakeries

Inline Tube Axial Fan



- Uses propeller blades for parallel airflow to the rotating shaft.
- Highly recommended for industrial and commercial sectors.
- Ideal for space-limited process applications.
- Generates large airflow volume in low-pressure conditions.
- Diverse applications: removes heat, smoke, and fumes, aids drying processes, and provides comfort and process cooling.
- Versatile for both supply and exhaust configurations.

Inline Cabinet Fan



- Impeller: Forward curved.
- Air Flow Range: 500 m³/h to 8500 m³/h.
- Static Pressure: Up to 500 Pa.
- Material: GI.
- Temperature Rating: 50degc.
- Dynamic Balancing: G2.5, statically and dynamically balanced according to ISO 1940 / AMCA 204 Performance: In compliance with AMCA 210 & 300 standards.
- Manufacturing Standards: ISO 9001 / 14001 / 45001.

Centrifugal SISW / DIDW Fans



- Airflow Range: 300 ~30,000 CFM
- Static Pressure Range: 136 ~1,400 Pa
- Drive Type: Belt/ Direct drive
- Mounting Types: Base Mount/ Ceiling Hung
- Applications: Commercial ventilation / Kitchen fume exhaust



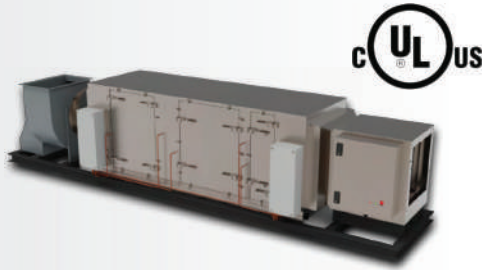
- A wall-mounted air conditioner is a type of split AC unit with an indoor and outdoor component that is installed high on a wall, often for a more subtle and less intrusive appearance. These units are known for their energy efficiency and are a popular choice for smaller rooms like bedrooms and offices, as they are often more efficient than portable units.

Brands



Kitchen Ecology Unit & Air Curtain

Pollution Control Unit



- Solid state, pulse width modulating power supplies
- Deep electrostatic cells with spiked Ionizing blades
- Motorized water wash manifolds with spray nozzles (ESP Section)
- Internal or external installation
- Certification: UL 8782

Blower Section



- Centrifugal backward inclined arrangement
- Optional SISW / DIDW type, depending on cooking load.
- Integration with ZOÉ DCKV system.
- Internal or external installation
- UL762 / Fire Rated / Local guidelines
- Certification: UL 705 / UL 762 / UL 783 / Applus F400

Electrostatic Precipitator



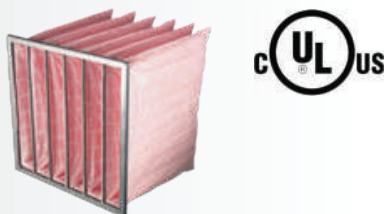
- Solid state power module control
- Ionization section voltage 12000V / 6000V
- Maintenance & fault alarm signal indicators
- Integration with ZOÉ DCKV system
- Applicable standards: UL867 / CE

Odor Control Section



- Multiple technologies for odor control.
- Common technologies used:
- Gas phase filtration
- Ozone Generators
- UV-C Filtration
- Odor Neutralizers / Spray System

Multi stage particulate filter



- Removal of coarse, grease and smoke.
- Pressure monitoring across each stage
- Side / Front removal method.
- Applicable standard: UL 900

Optional Components



- Fire Dampers / Fire Stat / DPS / DPT / Inspection Window & Light
- Fire Suppression System / Non-return Dampers.

Azma International for Air conditioning, Ventilation & Kitchen Equipment products deals with major brands like ECO Air from UAE & Fujiaire from Malaysia.

Brands



Sealants, Coatings & Adhesives



Sealants, Coatings, & Adhesives are substances applied to surfaces to create a protective, often waterproof, barrier against liquids, gases, dust, and other contaminants. While coatings form a hard surface layer, sealants fill gaps between surfaces, providing both adhesion and a protective barrier. Common types include acrylics, polyurethanes, and silicones, with applications ranging from building and construction to automotive and marine industries.

Bituminous – Concrete Chemicals – Floor Coatings & Adhesives – HVAC –Industrial Coatings – Sealant – Specialized Coatings & Sealants – Water Proofing

Available range

- 32-17 - Anti-Bacterial Acrylic Mastic Sealant
- 81-10 - Synthetic Rubber-Based Duct Adhesive
- 30-36 AF - Thermal Insulation Anti-Fungal Protective Coating
- 30-36 - Canvas Cloth Coating and Lagging Adhesive
- 60-95 - Fungicidal Anti-Microbial Protective Coating
- 30 – 80 - Vapor Barrier Anti-Fungal Canvas Coating
- RG 242 - Elastomeric Rubber Adhesive

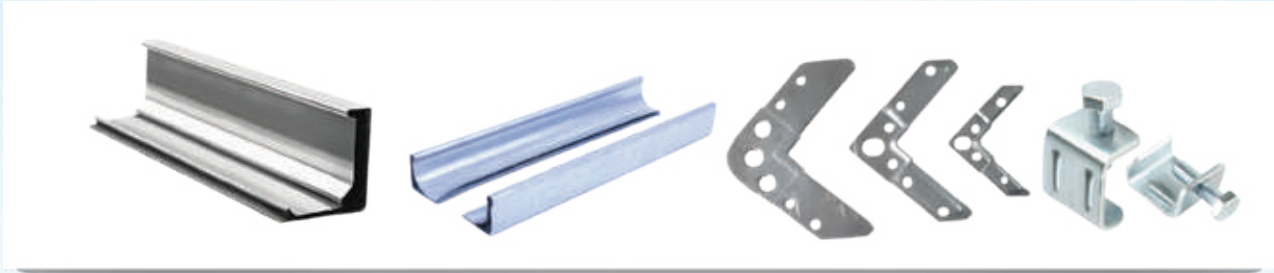
Azma International for Sealants, Coatings & Adhesives deals with major brands from UAE origin.

Brands

UAE Origin



Flanging Systems



Available Sizes – 20mm, 25mm, 30mm, 35mm, 40mm for Flanges & Corners & G Clamp.

Complies with HVAC Specification DW 144 & SMACNA Standards & manufactured with Z 275 or G90 Zinc Coating. Suitable for HVAC specification joint rating upto J6 & pressure class A, B & C Azma International for Flanges & Corners deals with major brands from UAE origin.

Flexible Ducts – Insulated - UL & Non-UL



Specification

Diameter Insulation : 4" to 20"
 Density Available : (16, 24, 32) kg/m³
 Insulation Thickness : 25 mm
 Length Maximum : 25 feet
 Velocity Operating : 5000 FPM (25.5 m/s)
 Temperature : -30°C to +150°C

Maximum Positive Pressure : 10" W.C. (2.5 KPa)
 Maximum Negative Pressure : 1/2" W.C. (0.12 KPa)
 Insulation R Value : 4.2 or 6 (F-hr/BTU)

Brands

UAE Origin



Flexible Ducts – Un Insulated



Specification

Diameter : 4" to 20"

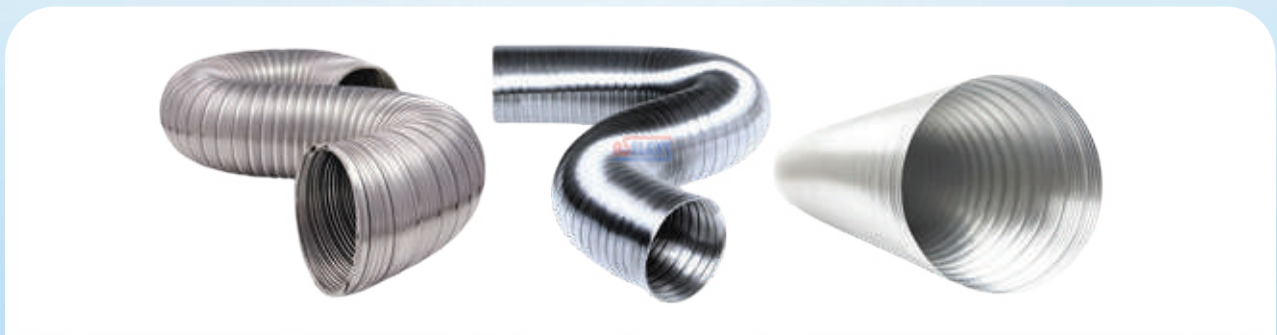
Length : 25 feet

Maximum Velocity : 5000 FPM (25.5 m/s)

Maximum Positive Pressure : 10" W.C. (2.5 KPa)

Maximum Negative Pressure : 1/2" W.C. (0.12 KPa)

Semi-rigid Flexible Duct



Specification

Available ID : 3" to 14"

Standard Length : 10 feet

Azma International for Flexible Ducts – Insulated & Un-Insulated, semi-rigid flexible ducts deals with major brands from UAE origin.

Brands

UAE Origin



Flexible Duct Connector – Insulated & Un-Insulated- UL & Non-UL



Available Models – Vinyl/Neoprene/Silicone

Un-Insulated Flexible Duct Connector Complies with NFPA 701 – 2019

Insulated Flexible Duct Connector Complies with BS 3424 & BS 5438

Un-Insulated Duct Connectors

MODEL	B = STEEL WIDTH		C = FABRIC WIDTH	
			mm	inches
Vinyl Coated DF-PV	28 mm	1-1/8"	40 mm	1-9/16"
			60 mm	2-3/8"
			75 mm	3"
			100 mm	4"
Neoprene Coated DF-GN	35 mm	1-3/8"	40 mm	1-9/16"
			60 mm	2-3/8"
			75 mm	3"
			100 mm	4"
Silicone Coated DF-GS	45 mm	1-3/4"	60 mm	2-3/8"
			75 mm	3"
			100 mm	4"
			150 mm	6"
	70 mm	2-3/4"	75 mm	3"
			100 mm	4"
			150 mm	6"

Insulated Duct Connectors

MODEL	B = STEEL WIDTH		C = FABRIC WIDTH	
			mm	inches
Vinyl Coated DF-PV-IN	28 mm	1-1/8"	40 mm	1-9/16"
			60 mm	2-3/8"
			75 mm	3"
			100 mm	4"
Neoprene Coated DF-GN-IN	35 mm	1-3/8"	40 mm	1-9/16"
			60 mm	2-3/8"
			75 mm	3"
			100 mm	4"
Silicone Coated DF-GS -IN	45 mm	1-3/4"	60 mm	2-3/8"
			75 mm	3"
			100 mm	4"
			150 mm	6"
	70 mm	2-3/4"	75 mm	3"
			100 mm	4"
			150 mm	6"

Azma International for Flexible Duct Connectors – Insulated & Un-Insulated for Vinyl, Neoprene & Silicone deals with major brands from UAE Origin.

Brands

UAE Origin



Stuck Up Pins



Specification

Galvanized steel with self-adhesive base 50 mm x 50 mm & 35 mm x 35 mm.

- Zinc-plated steel pins or aluminum (SS or copper on request), diameter 2.8 mm and lengths from 30 mm to 110 mm.
- Acrylic adhesive coated on both sides
- Silicon protective release paper
- Service temperature ranging from -40° C to + 80° C (+100° C for short periods of time)
- Resistant to water, detergents, alcohols, aliphatic solvents, and some aromatic solvents
- Fastening Washer - Galvanized Steel / Bevelled edges

Steel Base: 50 mm x 50 mm (2" x 2")

Standard Packing: 500 pins and 500 washers per box

Self-adhesive Aluminum Nail Model #	Self-adhesive Steel Nail Model #	Nail Size Inch
DP2" x 1 14"	DP2" x 1 14"S	1-1/4"
DP2" x 1 12"	DP2" x 1 12"S	1-1/2"
DP2" x 1 34"	DP2" x 1 34"S	1-3/4"
DP2" x 2"	DP2" x 2"S	2"
DP2" x 2 12"	DP2" x 2 12"S	2-1/2"
DP2" x 2 34"	DP2" x 2 34"S	2-3/4"
DP2" x 3"	DP2" x 3"S	3"
DP2" x 3 14"	DP2" x 3 14"S	3-1/4"
DP2" x 3 12"	DP2" x 3 12"S	3-1/2"
DP2" x 3 34"	DP2" x 3 34"S	3-3/4"
DP2" x 4"	DP2" x 4"S	4"

Steel Base: 35 mm x 35 mm (1-3/8" x 1-3/8")

Standard Packing: 1000 pins and 1000 washers per box

Self-adhesive Aluminum Nail Model #	Self-adhesive Steel Nail Model #	Nail Size Inch
DP2" x 1 14"	DP2" x 1 14"S	1-1/4"
DP2" x 1 12"	DP2" x 1 12"S	1-1/2"
DP2" x 1 34"	DP2" x 1 34"S	1-3/4"
DP2" x 2"	DP2" x 2"S	2"
DP2" x 2 12"	DP2" x 2 12"S	2-1/2"
DP2" x 2 34"	DP2" x 2 34"S	2-3/4"
DP2" x 3"	DP2" x 3"S	3"
DP2" x 3 14"	DP2" x 3 14"S	3-1/4"
DP2" x 3 12"	DP2" x 3 12"S	3-1/2"
DP2" x 3 34"	DP2" x 3 34"S	3-3/4"
DP2" x 4"	DP2" x 4"S	4"

Azma International for Stuck-Up Pins deals with major brands from UAE Origin

Brands

UAE Origin



Adhesive Tapes



Available type of Tapes for HVAC Application

- Aluminum Foil Tape
 - Alu Glass Tape (FR Grade)
 - FSK Tape
 - Reinforced Aluminum Foil Tape
 - Alu Pet Tape
 - PVC Tape
 - Duct Tape
 - EVA Foam Tape
 - NBR Foam Tape
 - Double Sided PE Foam Tape
- Other Types of Tapes includes Surface Protection Tapes/Printed t
Packaging Tapes/Clear or Brown Colored Tapes/High Temperature Masking
Tapes/Industrial Tapes/Warning, Caution & Barricade Tapes.

Azma International for all above types of tapes deals with major brands from UAE origin.

Brands

UAE Origin



Grills, Registers & Diffusers



Grille

A grille is a perforated cover typically made of metal, plastic, or other materials. It is installed over an opening in a duct or wall to allow air to flow into or out of the HVAC system. Grilles often have a regular pattern of openings that help protect the ductwork from debris while allowing the air to pass through. They are commonly used in return air vents or in locations where the primary purpose is to allow air circulation without directing the airflow in a specific direction.

Register

A register is a type of vent that combines a grille with an adjustable damper or louver. It allows you to control the direction and volume of airflow. Registers are usually found on walls, floors, or ceilings and are used to supply or return air to or from the HVAC system. By adjusting the damper or louver, you can direct the airflow to specific areas of the room or adjust the amount of air coming through the vent.

Diffuser

A diffuser is a component specifically designed to disperse air evenly and gently into the occupied space. It has a more sophisticated design compared to a simple grille or register. Diffusers are often used in commercial or larger residential spaces where a comfortable and uniform air distribution is desired. They promote better air mixing, reduce drafts, and create a more pleasant indoor environment.

Security Grills

Security grilles and registers are designed to provide maximum security and superior performance when used in HVAC applications that require secured air outlets. Constructed from heavy-gauge welded steel sheet and used in areas where maximum security is vital. These grilles can be used for both supply and return air

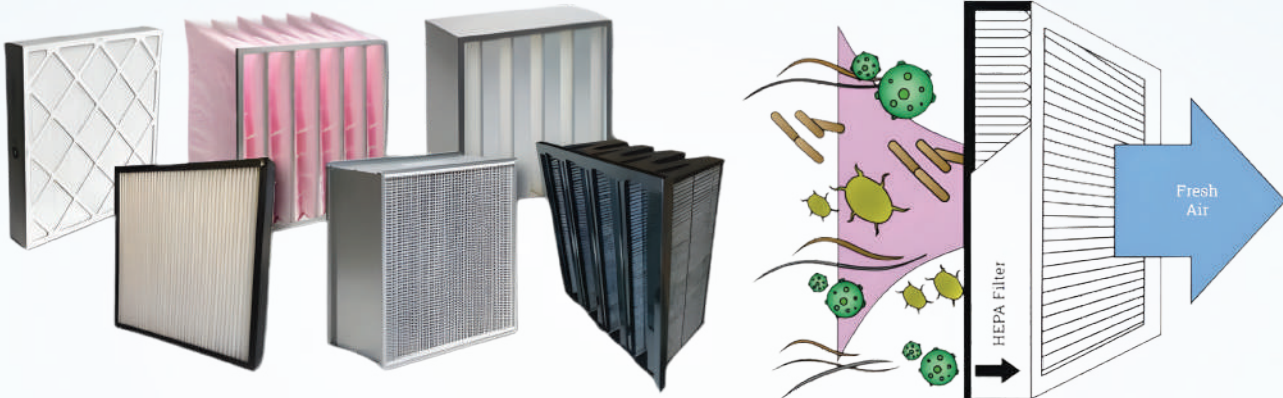
Azma International for all above products deals with major brands from UAE origin.

Brands

UAE Origin



Air Filters



The basic function of this filter is to protect the inside of the unit from the dust and other contaminants that are found in the air, including hairs, pet dander and fibers. As the air passes through the filter, this dust and dirt gets caught to stop it from entering different parts of the system.

HEPA Filter is an acronym for "high efficiency particulate air [filter]" (as officially defined by the U.S. Dept. of Energy). This type of air filter can theoretically remove at least 99.97% of dust, pollen, mold, bacteria, and any airborne particles with a size of 0.3 microns (μm).

According to the EN779 and EN1822 standards published by CEN (European Committee for Standardization) and used in European Union countries, air filters are classified into Coarse (G1, G2, G3, G4), Fine (F5, F6, F7, F8, F9), High Efficiency-HEPA (H10, H11, H12, H13, H14), and Ultra High Efficiency-ULPA (U15, U16, U17) categories. As known, G and F type filters are used in normal comfort applications and for the protection of high efficiency filters. This study will examine the standards related to high efficiency filters used in clean rooms, namely HEPA filters.

Clean room or clean environment applications are constantly increasing in our country, as in the whole world. The globalization in the pharmaceutical sector necessitates the production of products in environments compliant with existing standards for them to be marketed, thus popularizing clean room applications. Previously, HEPA (High Efficiency Particulate Air) filters, which were used only in A, B, C Class environments according to GMP rules, have started to be used as a standard in D Class rooms by some pharmaceutical companies in recent years.

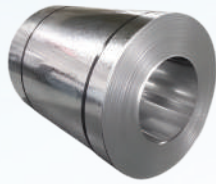
In environments where it is critical to have air handling units with a high efficiency — such as military, hospital, semiconductor, or nuclear application, as well as microbiological laboratories — an EPA, ULPA or HEPA (high-efficiency particulate air) filter is used.

Azma International for Air Filters deals with major brands from UAE origin.

Brands



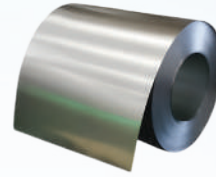
Sheets & Coils - GI/MS/SS/AL



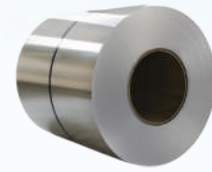
Galvanized Iron Coil



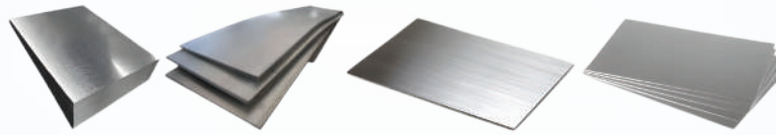
Mild Steel Coil



Stainless Steel Coil



Aluminum Coil



Sheets – GI/MS/SS/AL

Specifications

GI

Galvanized Coils & Sheets

Type	Regular/ Zero Spangle
Thickness 0.28 mm to 4.0 mm	
Width	1219 mm/1500 mm
Coating	Z120/Z180/Z275
Grade	ASTM A-653

AL

Type	Plain Sheets
Thickness 0.4 mm to 10 mm	
Width	1219 mm x 2438 mm
Alloy	AA1100/AA1200/AA3003/AA5005
Type	Coils
Thickness 0.5 mm to 3 mm	
Width	1219 mm/1500mm
Alloy	AA1100/AA1200/AA3003
Type	Chequered Sheets
Thickness 1.8 mm-10mm	
Width	1219mmx 2438 mm
Alloy	AA1100

MS

Hot Rolled Steel Plates

Type	Hot Rolled Steel Plates
Thickness 4 mm to 60 mm	

Width	2 M/2.5 M/3.05 M
Length Standard	6 M/12 M
Commercial	ASTM A36/S275JR/S355JR/S355 JO
Offshore	S355J2/S355K2/API 2H50
Boiler/Pressure Vessel	ASTM/ASME 60/65/70 (Normalized/NAC)
Shipbuilding Grade ABS:	A/B/C/AH32/AH36/EH36

SS

Stainless Steel

Type	Coil & Sheets
Thickness 0.30-50 mm	

Width	1219/1250/1500/2000 mm
Coil ID	508/610
Grade	304/316L/304L/430/310S

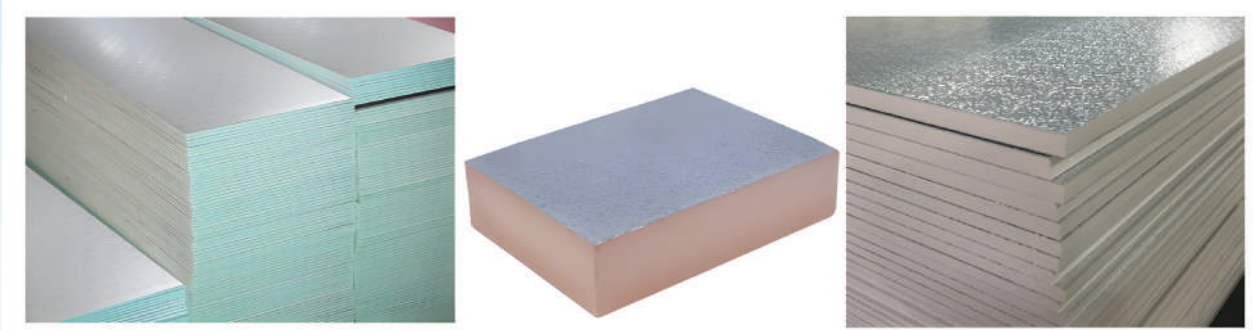
Finishes: Hot Rolled No. 1 finish, 2B finish, Brush finish, Hairline finish, Mirror finish.

Azma International for GI, Mild Steel, Stainless Steel & Aluminum Coils/Sheets deals with major brands like AGIS, Outokumpu & Hindalco.

Brands



Pre-Insulated Duct Sheets



Pre-Insulated Sheets (P.I) offer a cost-effective, high-performance insulation solution for the building and construction industry. Made with high-quality polyurethane foam, these panels

provide excellent thermal insulation, structural stability, and are moisture-resistant. Lightweight and easy to install, they are ideal for use in walls, roofs, and floors. With a durable, smooth finish, these panels can be painted or coated to suit your building's exterior. The primary types of pre-insulated duct sheets are constructed with phenolic, polyurethane (PU), and polyisocyanurate (PIR) foam cores, distinguished by their insulation materials and performance characteristics. Phenolic ducts offer excellent fire resistance and thermal properties. PU ducts provide a balance of strength, water resistance, and fire resistance. PIR ducts are also energy-efficient with good thermal performance and flame-retardant properties.

Types of Pre-Insulated Duct Panels

- Phenolic
- Polyurethane(PU)/Polyisocyanurate (PIR)

Standard Panel Dimensions

- Thickness: Common thicknesses include 10mm, 15mm, 20mm, 25mm, 30mm, and 40mm. Thicker panels are available for specific project needs.
- Panel Size: Standard panel sizes are typically around 3950mm, 2950mm, or 2900mm in length by 1200mm in width.

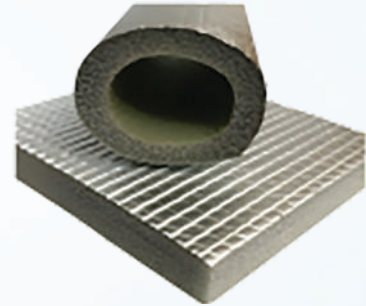
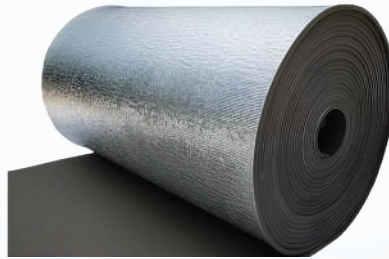
Azma International for Pre-Insulated duct sheets – Phenolic/PIR deals with major brand of Pearl Industries from UAE.

Brands



Insulation materials

XLPE



XLPE (Cross-Linked Polyolefin) foam insulation for HVAC ducts or Copper Pipes has specifications including closed-cell structure, low thermal conductivity (e.g., 0.033 W/mK), and negligible water vapor permeability (or high resistance), and specific density ranges (e.g., 25-30 kg/m³). It also meets fire safety standards like ASTM E84 or BS 476, offering a Class O rating, and resisting mold, fungi, and pests.

The insulation is available in sheets or rolls with various thicknesses (e.g., 6mm to 50mm) and can have integrated foil facings for added protection.

Size/Thickness Available – 4mm | 5mm | 6mm | 8mm | 9mm | 10mm | 13mm | 15mm | 18mm | 19mm | 20mm | 25mm | 50mm

Azma International for XLPE insulation works with major brand of Aerolam from Bahrain.

Brands



Insulation materials

NBR



NBR insulation is a flexible, closed-cell elastomeric foam insulation made from nitrile butadiene rubber. Its primary purpose is to provide superior thermal and acoustic insulation, and it is widely used for pipes, air ducts, and other applications in HVAC, refrigeration, and plumbing systems. Nitrile rubber insulation size charts list thicknesses from 6mm up to 50mm and widths typically of 1m (1000mm) for sheets, while tubes are sized by diameter for various pipes. Common thicknesses include 6mm, 9mm, 13mm, 19mm, 25mm, 32mm, and 50mm, with lengths varying by thickness. The appropriate size depends on the application, such as duct or pipe insulation, and the specific manufacturer's product specifications.

It also meets fire safety standards like ASTM E84 or BS 476, offering Class O rating, and resist mold, fungi, and pests.

Azma International for NBR insulation deals with major brand of K-Flex from UAE.

Brands



Insulation materials

Rockwool



Rockwool, also known as mineral wool or stone wool, is a type of insulation made from natural volcanic rock (basalt or diabase) and recycled steel slag. The materials are melted at high temperatures and spun into fine fibers, which are then compressed into various products like boards, rolls, and batts. It is widely used in residential, commercial, and industrial construction for its superior thermal, acoustic, and fire-resistant properties.

Key Features

- Superior fire resistance: As a non-combustible material with a melting point above 1,000°C (1,800°F), rockwool is highly fire-resistant and can help slow the spread of flames in a fire.
- Excellent acoustic performance: The dense, non-directional fiber structure effectively traps sound waves and reduces vibrations, making it an excellent choice for soundproofing walls, floors, and ceilings.

Common applications

Rockwool is a versatile material used in many areas of a building:

- Walls: Used in both interior partition walls for sound control and exterior walls for thermal and fire protection.
- Ceilings and floors: Applied in ceilings to absorb sound between floors and in floors to provide both thermal and acoustic insulation.
- Roofs: Utilized for flat and pitched roof insulation to increase energy efficiency.
- HVAC systems: Used to insulate ventilation ducts and pipes to reduce energy loss.
- Industrial applications: Provides high-temperature insulation for equipment, tanks, and other industrial settings.
- Passive fire protection: Incorporated into structural systems and firestopping applications to enhance a building's fire resilience.

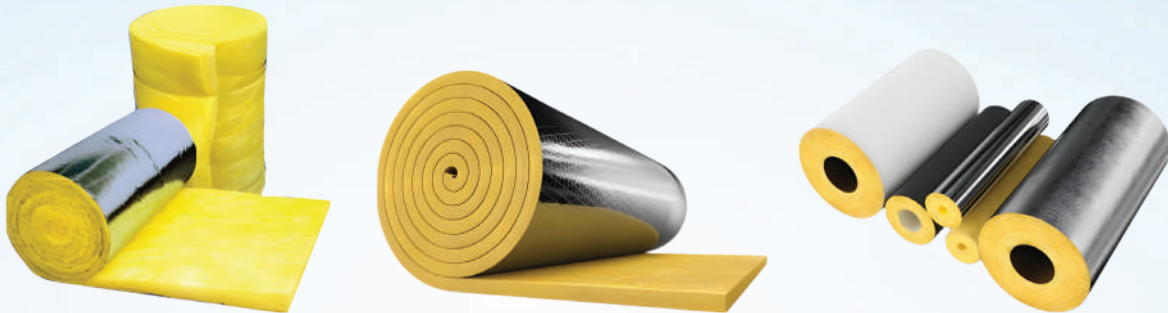
Azma International for Rockwool insulation deals with major brand of Fujairah Rockwool from UAE.

Brands



Insulation materials

Fibreglass (Glasswool)



Fiberglass insulation, also known as glass wool, is a cost-effective and energy-efficient material used for thermal and acoustic insulation in residential and commercial buildings. It is made from recycled glass and sand, which is melted and spun into fine fibers to create a wool-like texture. These fibers trap small pockets of air, which slows down heat transfer.

Types and applications

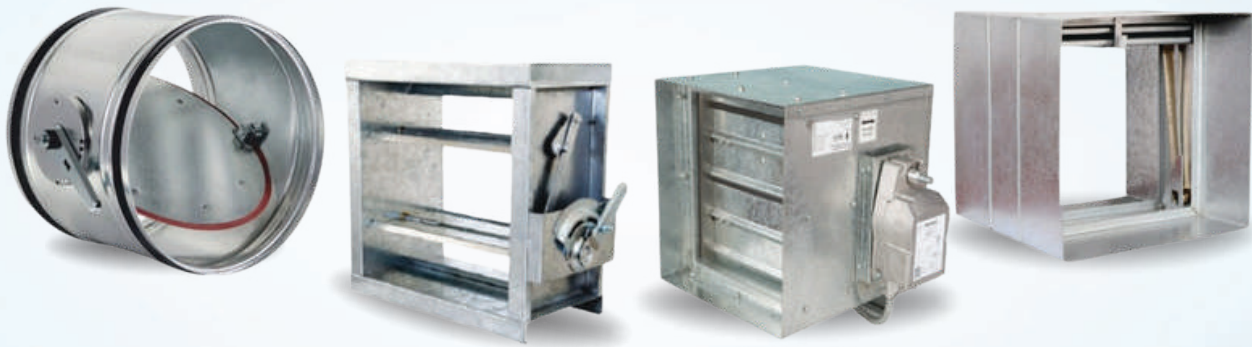
Fiberglass insulation comes in different forms to suit various applications:

- Batts and rolls: Pre-cut sections designed to fit between joists, studs, and rafters in walls, ceilings and floors.
- Loose-fill: Blown into attics and other irregular or hard-to-reach spaces using a special machine.
- Rigid boards: Dense panels used for floors, foundations, and basement walls where structural support is needed.
- Pipe insulation: Pre-formed sections designed to snap onto pipes to provide thermal and acoustic insulation for hot or cold piping.
- Duct insulation: Used for exterior insulation on heating and air conditioning ducts.

Azma International for Fibreglass/Glasswool insulation deals with major brand of Kimmco Isover from Kuwait.

Brands



Dampers – VCD, NRD, FD, MSFD & MSD

A damper is a mechanical device that regulates the flow of air or other fluids within a duct or system, acting like a valve for gases, by controlling the position of blades to open, close, or adjust flow. In buildings, air dampers are used in HVAC systems to balance airflow, control pressure, stop air to unused rooms, and prevent the spread of fire and smoke.

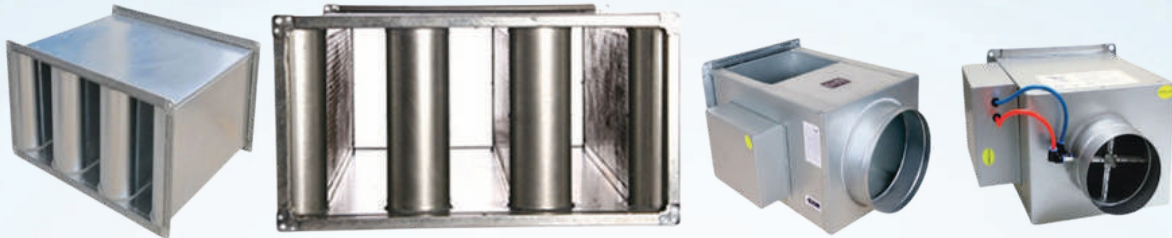
Types and Functions in HVAC Systems

- Volume Control Dampers: Open and close to direct and regulate airflow throughout the ductwork.
- Backdraft Dampers: Allow airflow in one direction only and prevent reverse airflow.
- Relief Dampers: Release excess airflow from a system to lower indoor air pressure.
- Fire and Smoke Dampers: These are safety devices that close to stop the spread of flames, smoke, and heat in the event of a fire.

Azma International for all types of dampers deals with major brands from UAE Origin.

Brands**e.h.price**

Sound Attenuators & VAVs



Sound Attenuator

A Sound Attenuator, also known as a duct silencer or muffler, is a noise control device in an HVAC system that absorbs and dissipates sound waves to prevent noise from traveling through the ductwork. By installing sound attenuators, usually near noise-generating components like fans, the HVAC system can achieve target noise criteria, ensuring quiet operation within occupied spaces.

Application

- Fan Inlet and Discharge
- Air Handling Units
- Cooling Towers
- Radiators
- HVAC Duct Systems and Commercial, Institutional and Industrial Buildings

Variable Air Volume

A VAV (Variable Air Volume) system is an energy-efficient HVAC design that controls the cooling and heating in different zones of a building by varying the volume of air supplied at a relatively constant temperature, rather than varying the air temperature. Unlike constant air volume (CAV) systems, VAVs use VAV boxes to modulate airflow to individual zones based on their specific cooling demands, leading to improved occupant comfort, reduced energy consumption, and lower operating costs.

Azma International for Sound Attenuators & VAVs deals with major brands from UAE origin.

Brands

e.h.price

Duct Heaters



Duct heaters are the part of your HVAC that preheats the air before it is being distributed to the rooms of your property. The most common type is the electrical duct heaters. They create heat while passing an electric current through resistance (coils).

Electric duct heaters come in two types: open coil and tubular. Available coil heaters are ideal for low-temperature applications, while tubular heaters are better suited for high-temperature applications.

Azma International for Duct Heaters deals with major brands from UAE origin.

Hangers & Supports

Pipe Supports



Beam Clamps



Clevis Hanger - Heavy Duty



Clevis Hanger - Standard Duty



PE Pipe Support



Plain Split Clamps



PUF Support



Riser Clamps



Roller Chair



Roller Hanger



Rubber Lined Split Clamps



Rubber support insert



Sprinkler clamps-Heavy Duty



Sprinkler clamps-Standard Duty



U-Bolts



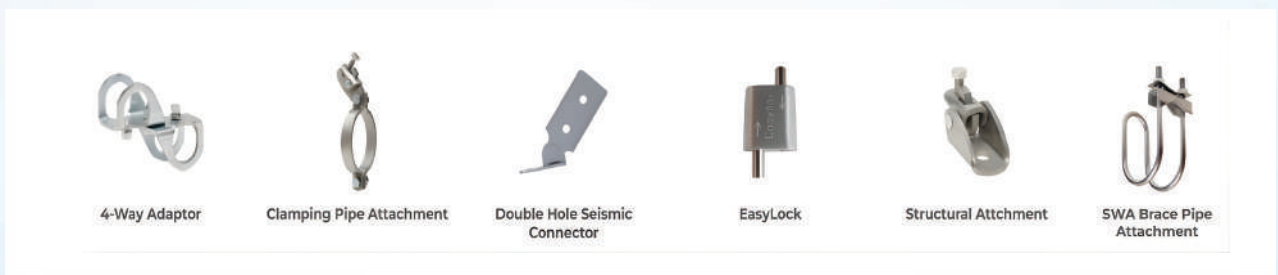
U-Strap Clamps

Hangers & Supports

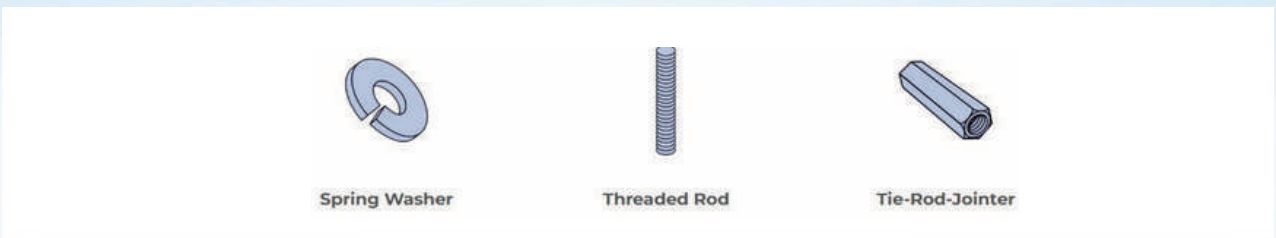
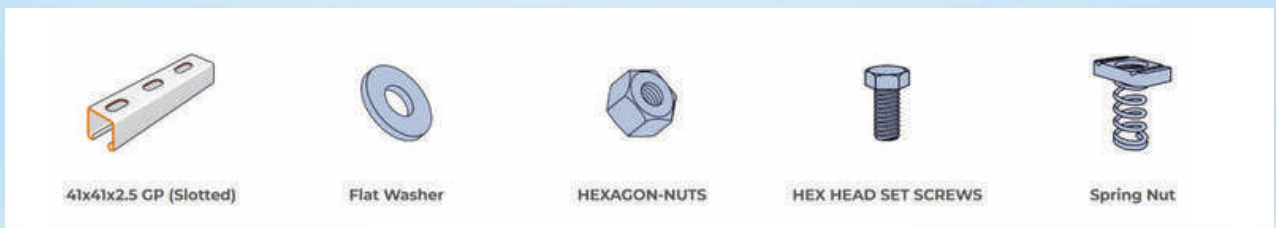
Rooftop supports



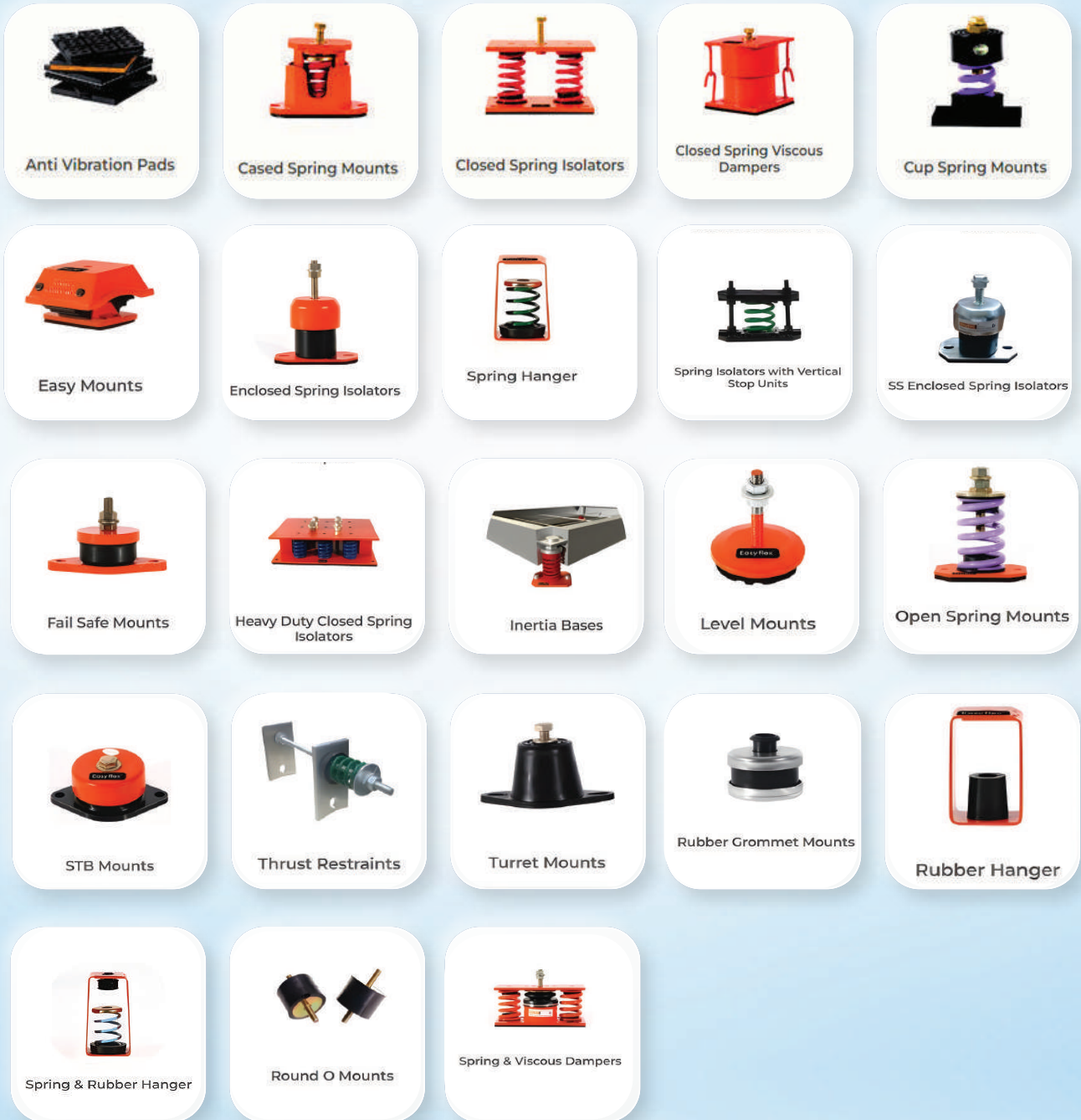
Seismec Supports



Strut Systems



Azma International or Hangers & Supports deals with major brands from UAE origin.



Other Miscellaneous HVAC Accessories



Canvas Cloth



Unifix



Rawl Bolts

Azma International for Vibration Isolation products & other HVAC Accessories deals with major brands from UAE origin.



AZMA INTERNATIONAL

Your Complete HVAC-R Solution Partner



Mainland Dubai:

**AZMA INTERNATIONAL
AIRCONDITION & REFRIGERATION
SPARE PARTS TRADING L.L.C**

+971 4 236 6433

+971 50 653 8218

sales@azmaintl.com

Shop No. 11 Lootha - 2 Building 23rd St.
Al Rigga, Deira, Dubai - U.A.E.



Jebel Ali Freezone:

AZMA INTERNATIONAL FZE

+971 50 544 7864

info@azmaintl.com

FZJOA1421WS20, Jebel Ali Free Zone,
Dubai, United Arab Emirates.



SCAN FOR WEB



SCAN FOR CONTACT

www.azmaintl.com